

# Cambria Price Sheet

## Step 1

Choose a top

### RECTANGLE CAMBRIA TOP

Size	Model code	Cambria
36x72	1P472C	\$4,380
36x84	1P484C	\$5,093
36x96	1P496C	\$5,805
42x72	1P572C	\$5,093
42x84	1P584C	\$5,924
42x96	1P596C	\$6,754
48x72	1P672C	\$5,805
48x84	1P684C	\$6,754
48x96	1P696C	\$7,704



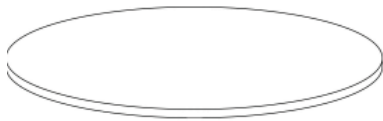
### BOAT SHAPE CAMBRIA TOP

Size	Model code	Cambria
36x72	1A472C	\$4,600
36x84	1A484C	\$5,348
36x96	1A496C	\$6,095
42x72	1A572C	\$5,348
42x84	1A584C	\$6,220
42x96	1A596C	\$7,092
48x72	1A672C	\$6,095
48x84	1A684C	\$7,092
48x96	1A696C	\$8,089



### ROUND CAMBRIA TOP

Size	Model code	Cambria
30"	1Q930C	\$1,591
36"	1Q936C	\$2,224
42"	1Q942C	\$3,016
48"	1Q948C	\$6,042



### SQUARE CAMBRIA TOP

Size	Model code	Cambria
30"	1R930C	\$1,591
36"	1R936C	\$2,224
42"	1R942C	\$3,016
48"	1R948C	\$6,042



## Step 2

Choose an edge



EASED EDGE



BULLNOSE



ROUNDROVER



BEVEL



DOUBLE ROUNDROVER



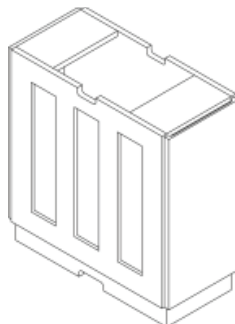
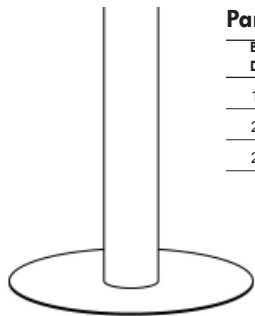
DEMI BULL/WATERFALL

## Step 3

Choose a base

### Parker Base

Base Diameter	Max Top Depth	Height	Model Code	Price
18"	36" Ro/Sq	27.75"	1RHB	\$560
23.75"	42" Ro/Sq	27.75"	1RHD	\$650
28"	48" Ro/Sq	27.75"	1RHF	\$815



### Veneer Palermo Base

Base Diameter	Max Top Depth	Height	Model Code	Price
24"	36"-48"	27.75"	W67-CASE-24	\$1,250
30"	48"-60"	27.75"	W67-CASE-30	\$1,350



### Laminate Cylinder Base

Base Diameter	Max Top Depth	Height	Model Code	Price
18"	36"-48"	27.75"	B63C-18	\$690
24"	54"-60"	27.75"	B63C-24	\$745
30"	60"-72"	27.75"	B63C-30	\$800

### Veneer Cylinder Base

Base Diameter	Max Top Depth	Height	Model Code	Price
18"	36"-48"	27.75"	B63C-18-VEN	\$890
24"	54"-60"	27.75"	B63C-24-VEN	\$940
30"	60"-72"	27.75"	B63C-30-VEN	\$990

Surfacetech