



## ENVIRONMENTAL ATTRIBUTES

- Cores made of 100% recycled material
- Laminates and backers GREENGUARD® certified
- Veneers meet FSC standards
- Can contribute to LEED points

## WARRANTY

- Limited Lifetime Warranty

## GENERAL DIMENSIONS

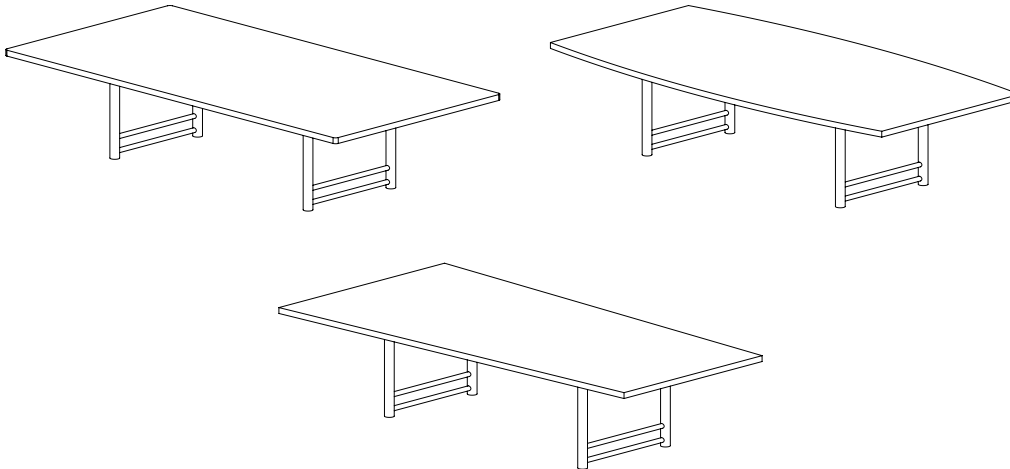
- Width: 24 - 288 inches
- Depth: 18 - 60 inches
- Height: 16 - 42 inches



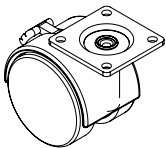
## ONXY COLLECTION

The H Leg of the Onyx table offers an unmistakable architectural element that adds style to any room. The H leg also results in a sturdy table that is built to last a lifetime.

## STANDARDS



## OPTIONS



casters

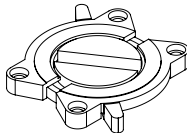


table locks



height adjustment

- fabric modesty panel
- laminate modesty panel
- metal modesty panel
- modesty panel wire management
- under table wire management
- vertical wire management
- grommets
- threaded inserts
- shorter height
- taller height
- self adjusting glides

# Surfacetech

www.surfacetech.com | (800) 241-2982 | fax (816) 231-1185 | 7106 E. Truman Rd. Kansas City, MO